



SENTI BIO

Engineering the Future of Cell & Gene Therapies



August 2024

Disclaimer

Forward Looking Statements

This presentation contains forward-looking statements of Senti Biosciences, Inc. ("we," "us," "our") within the meaning of the Private Securities Litigation Reform Act of 1995. Statements we make in this presentation may include statements which are not historical facts and are considered forward-looking within the meaning of Section 27A of the Securities Act of 1933, as amended, and Section 21E of the Securities Exchange Act of 1934, as amended, which are usually identified by the use of words such as "anticipates," "believes," "estimates," "expects," "future," "objective," "opportunity," "potential," "proposed," "targets," "intends," "may," "plans," "projects," "seeks," "should," "will," and variations of such words or similar expressions. We intend these forward-looking statements to be covered by the safe harbor provisions for forward-looking statements contained in Section 27A of the Securities Act and Section 21E of the Securities Exchange Act and are making this statement for purposes of complying with those safe harbor provisions. These forward-looking statements, including statements regarding attributes and benefits of our technology platform and of our product candidates, including their therapeutic potential; our cash runway; clinical trials, including trial design and endpoints, the timing of first-patient dosing and the potential data readouts of such trials; the anticipated timelines and financial elements of our existing collaborations, including statements about Senti Bio's collaboration with Celest; and our manufacturing process and its potential benefits, reflect our current views about our plans, intentions, expectations, strategies and prospects, which are based on the information currently available to us and on assumptions we have made. These forward-looking statements are provided for illustrative purposes only and are not intended to serve as, and must not be relied on as a guarantee, an assurance, a prediction or a definitive statement of fact or probability. Although we believe that our plans, intentions, expectations, strategies and prospects as reflected in or suggested by those forward-looking statements are reasonable, we can give no assurance that the plans, intentions, expectations or strategies will be attained or achieved. Many actual events and circumstances are difficult or impossible to predict, are beyond our control and will differ from assumptions. Furthermore, actual results may differ materially from those described in the forward-looking statements and will be affected by a variety of risks and factors that are beyond our control including, without limitation, the risk that results observed in studies of our product candidates, including preclinical studies and future clinical trials of any of our product candidates, will not be observed in ongoing or future studies involving these product candidates, the risk that we may cease or delay clinical development of any of our product candidates for a variety of reasons (including requirements that may be imposed by regulatory authorities on the initiation or conduct of clinical trials, the amount and type of data to be generated, or otherwise to support regulatory approval, difficulties or delays in subject enrollment and continuation in current and planned clinical trials, difficulties in manufacturing or supplying our product candidates for preclinical and clinical testing, and any adverse events or other negative results that may be observed during preclinical or clinical development), our ability to obtain, maintain and protect our intellectual property, our dependence on third parties for development and manufacture of product candidates, our ability to manage expenses and to obtain additional funding when needed to support our business activities and establish and maintain strategic business alliances and new business initiatives, the impacts of macroeconomic and geopolitical events, the hostilities in Ukraine, increasing rates of inflation and rising interest rates on business operations and expenses, and the risk that our product candidates may not produce therapeutic benefits or may cause other unanticipated adverse effects, as well as those set forth in the section titled "Risk Factors" of Senti Bio's most recently filed periodic report, and other documents filed by Senti Bio from time to time with the SEC. Except as required by law, we assume no obligation to update publicly any forward-looking statements, whether as a result of new information, future events or otherwise. This presentation shall not constitute an offer to sell or the solicitation of an offer to buy these securities, nor shall there be any sale of these securities in any state or jurisdiction in which such offer, solicitation, or sale would be unlawful prior to registration or qualification under the securities laws of any such state or jurisdiction.

Trademarks

This document contains references to trademarks, trade names and service marks belonging to other entities. Solely for convenience, trademarks, trade names and service marks referred to in this presentation may appear without the ® or TM symbols, but such references are not intended to indicate, in any way, that the applicable owner will not assert, to the fullest extent under applicable law, its rights to these trademarks and trade names. We do not intend our use or display of other entities' trade names, trademarks or service marks to imply a relationship with, or endorsement or sponsorship of us by, any other entities.

Investment Highlights and Upcoming Clinical Catalysts

2024 Accomplishments

SENTI-202 for AML

- ✓ First patient dosed in 2Q 2024

Anticipated Clinical Catalysts

SENTI-202 for AML

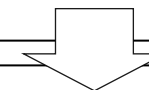
- Initial clinical data by year-end 2024
- Durability data in 2025

SENTI-301A for HCC (Liver Cancer)

- First patient dosing in China 4Q 2024

Central challenge in oncology:

Current therapies cannot precisely distinguish cancer vs healthy cells



Reduced therapeutic potential:

Lack of specificity leads to limited efficacy, relapse and safety issues

Senti's Approach:

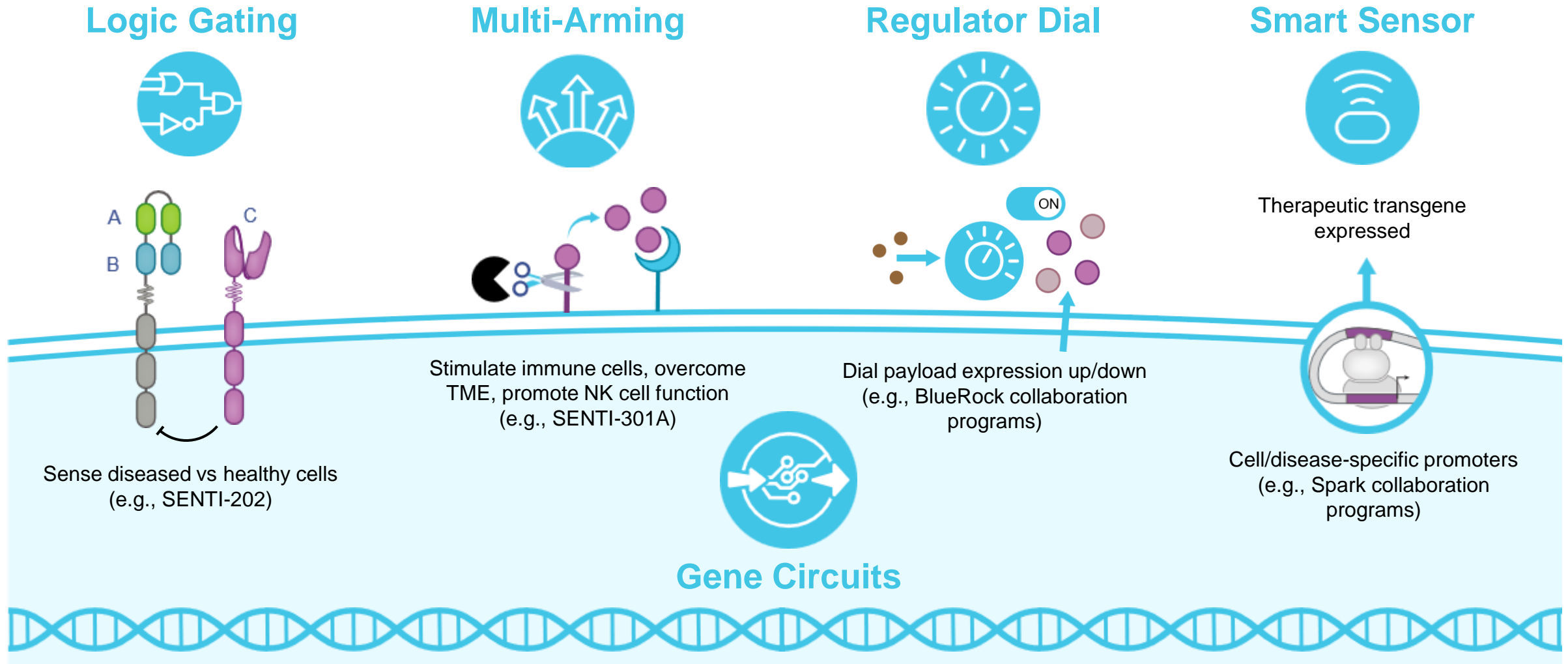
Senti's lead program, SENTI-202, utilizes proprietary Logic Gating technology designed to overcome AML disease heterogeneity by targeting LSCs while sparing healthy cells based on clinically validated CD33 and FLT3 targets










Broad Applicability:

Logic Gating technology has the potential to address a wide range of opportunities in oncology

Gene Circuits Could Enhance Precision, Control, and Activity of Cell & Gene Therapies



Internal Focus on Oncology, Partnering to Support Non-Oncology Indications

Programs	Target	Application	Preclinical	Early Stage Clinical	Late Stage Clinical	Collaborator
SENTI-202	CD33 and/or FLT3	AML, MDS and other blood cancers				
SENTI-301A¹	GPC3	HCC and other solid tumors				
Multiple Gene Therapy Programs	Undisclosed	Eye, CNS and liver diseases				
Multiple iPSC Cell Therapy Programs	Undisclosed	Regenerative medicine				

CNS: Central nervous system; HCC: Hepatocellular carcinoma; MDS: Myelodysplastic Syndrome

¹ Collaboration with Celest for clinical development to treat solid tumors in China, with an option to expand to Hong Kong, Macau, and Taiwan

Industry-Leading Management With Top-Tier Board and Scientific Advisors

Tim Lu, MD, PhD
CEO and Co-founder



Yvonne Li
Interim CFO and Treasurer



Kanya Rajangam, MD, PhD
President, Head of R&D and CMO



Scientific Advisors

James Collins, PhD
Scientific Co-Founder, MIT

Wilson Wong, PhD
Scientific Co-Founder, Boston University

Michael Andreeff, MD, PhD
MD Anderson Cancer Center

Martin Fussenegger, PhD
ETH Zurich

Lawrence Fong, PhD
UCSF

Michael Kalos, PhD
Arsenal, Janssen, Lilly

Ahmad (Mo) Khalil, PhD
Boston University

Robin Taylor, PhD, MBA
SeaGen, Genentech

Michael Varney, PhD
Erasca, Genentech

Board

James Collins, PhD
Scientific Co-Founder, MIT

Brenda Cooperstone, MD
Pfizer Rare Disease

Omid Farokhzad, MD
Seer Inc.

Tim Lu MD, PhD
CEO & Co-Founder

Ed Mathers
NEA



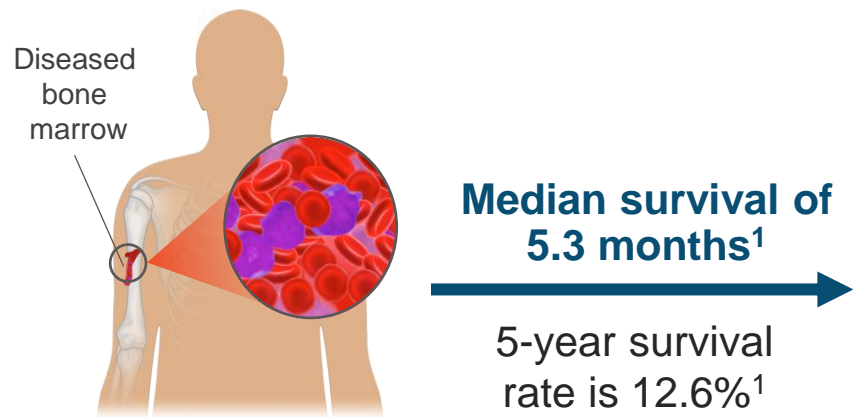
SENTI BIO

SENTI-202



Limited Standard of Care Options for R/R AML

R/R AML patient outcome



Major treatment challenges:

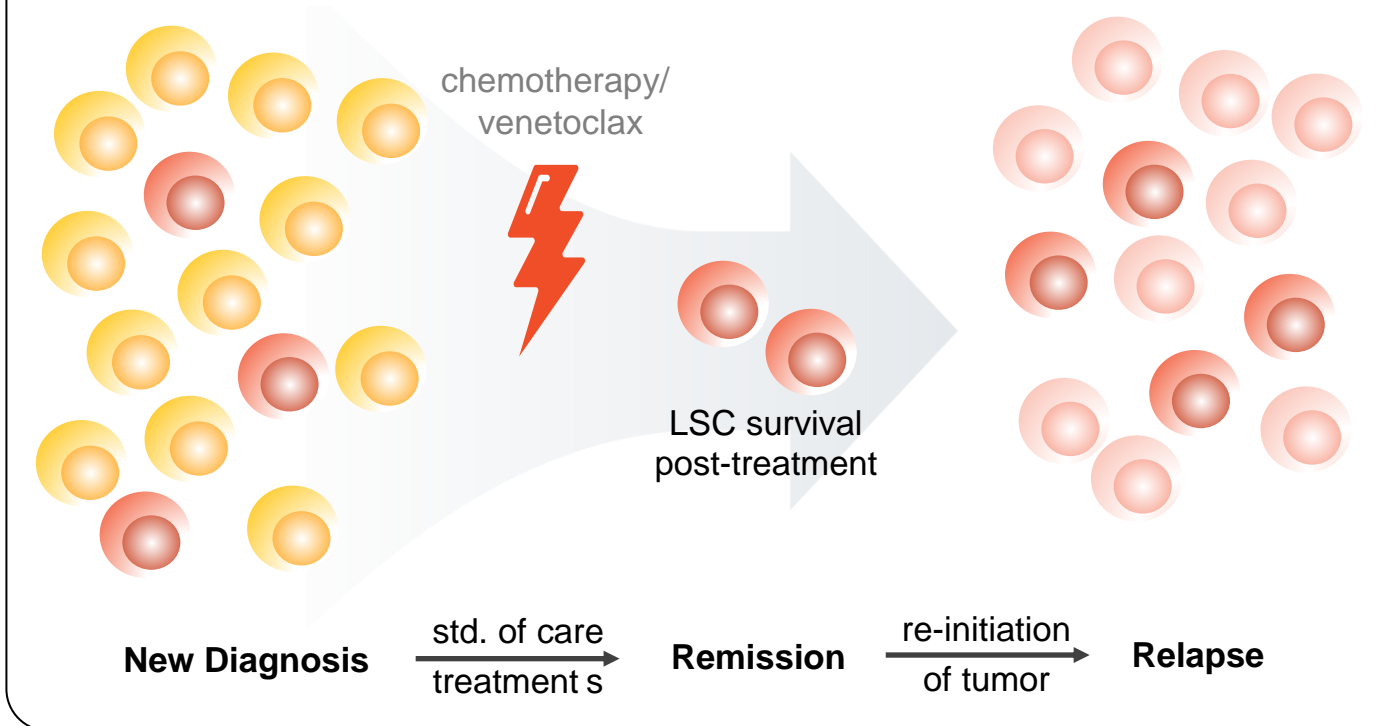
- 1 Disease heterogeneity
- 2 Durability of response
- 3 Healthy cell toxicity
- 4 Treatment tolerability

AML has the worst relapse rate of any blood cancer

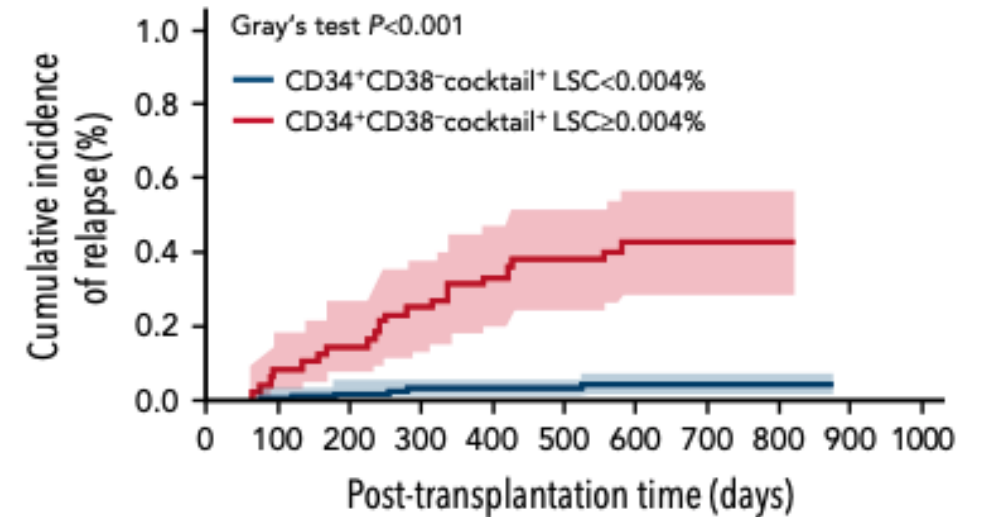
- 50%–70% of patients who obtain complete response (CR) eventually relapse²
- 21-32% CR/CRh rate with approved treatments for CD33+ AML, FLT3 and IDH1/2 mutated AML
 - No SOC after progression on mutationally targeted disease
- Allogeneic Hematopoietic Stem Cell Transplant (HSCT) is the only curative option but is limited to younger/ fit patients
- Presence of residual LSCs after treatment correlates with poorer prognosis and increased likelihood of relapse³
 - Residual LSCs contribute to worse prognosis and higher likelihood of relapse after treatment
 - Rare population that have markers similar to HSC; built in off-tumor on-target protection is key to effectively targeting LSCs

Targeting AML LSCs May Be Essential for Increased Durability and Longer Remissions

Etiopathology



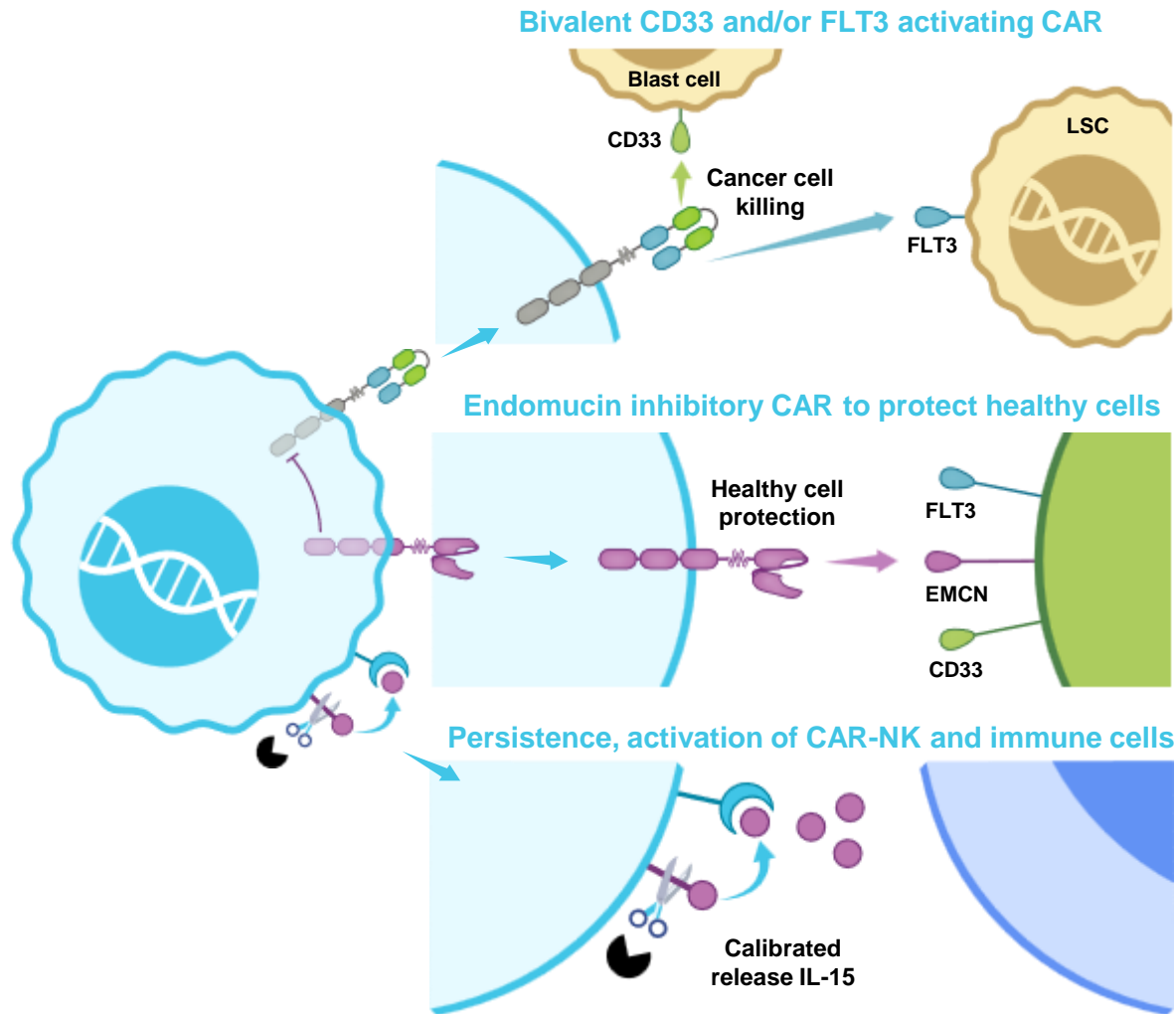
AML blast
 AML LSC
 AML blast (relapse)



Relapses after initial successful treatment are thought to originate from the outgrowth of persistent LSCs¹

- Relapse correlates with LSC frequency²
- No available therapies specifically target LSCs

SENTI-202 Is a First-In-Class Selective Off-the-Shelf Investigational Cell Therapy for Blood Cancers



Activating CAR “kill” signal

- Bivalent CD33 and/or FLT3 CAR targets validated AML targets
- Potential for deep and durable responses in AML and other blood cancers

Inhibitory CAR “protect” signal

- Inhibition by endomucin (EMCN) protective antigen
- EMCN selectively expressed on healthy hematopoietic stem cells (HSCs) for potentially improved safety and increased therapeutic window

Calibrated release IL-15

- Cell expansion, persistence, and tumor killing

Initial clinical data expected by year-end 2024

Durability data expected in 2025

SENTI-202 is Designed to Address AML Heterogeneity Which Contributes to Disease Relapse/Refractoriness

Treatment Challenges

1 Disease heterogeneity

AML cells have many antigen targets that are not uniformly expressed on all cancer cells

2 Durability of response

Limited durability from tumor escape, incomplete clearance of both leukemic blasts and LSCs

Other CAR-based therapies target a single AML antigen leading to tumor escape and eventual relapse¹

CD33 allogeneic CAR-NK cell therapy: 60% CR rate as of 11/2022 (previously 80% on 6/2022)²

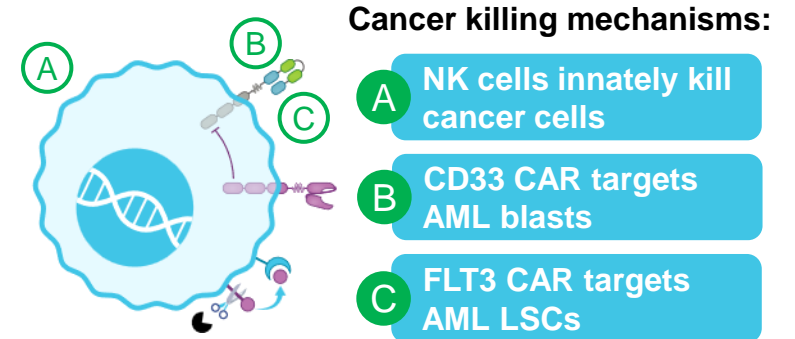
Targeting CD33 largely addresses blast cells and misses LSCs, leading to disease evasion and relapse

NKG2D allogeneic CAR-NK cell therapy: 22-67% CR/CRi rate and a short durability of <4 mo³

Leukemic stem cells downregulate NKG2D ligands leading to poor response durability¹

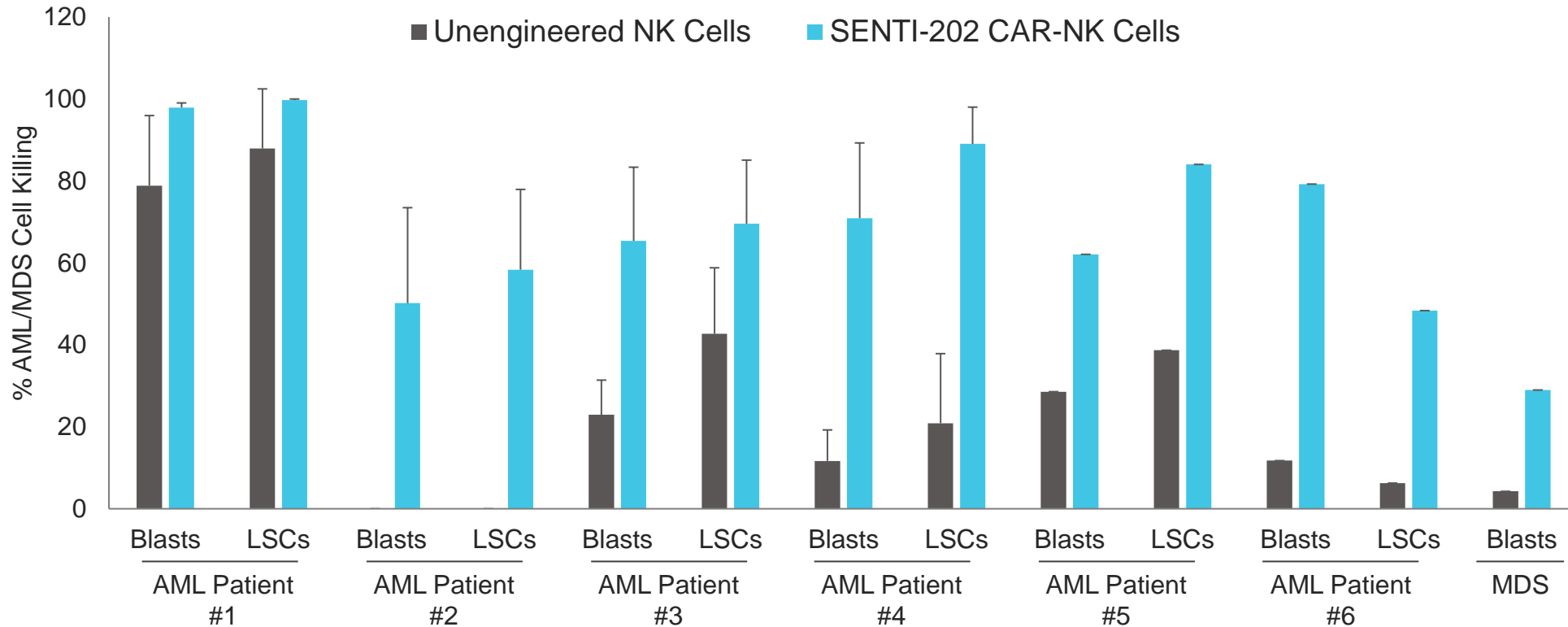
Senti's Solution

SENTI-202 incorporates three key killing mechanisms to overcome AML heterogeneity with potential for deeper and longer remissions



- Targeting FLT3 and CD33 addresses ~95% of AML patients
- **SENTI-202 is the only CAR-NK clinical program utilizing the OR Logic Gate to target both CD33 and/or FLT3 for AML**

SENTI-202 Has Shown Robust Preclinical In Vitro Cancer Killing Against Patient Samples

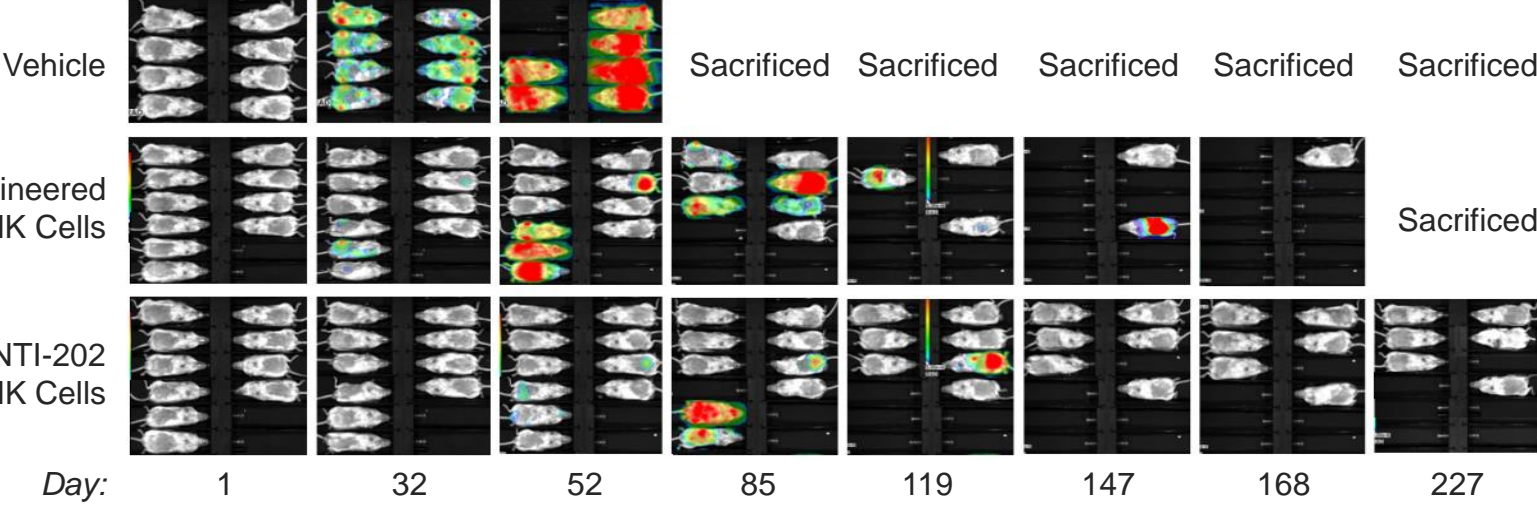
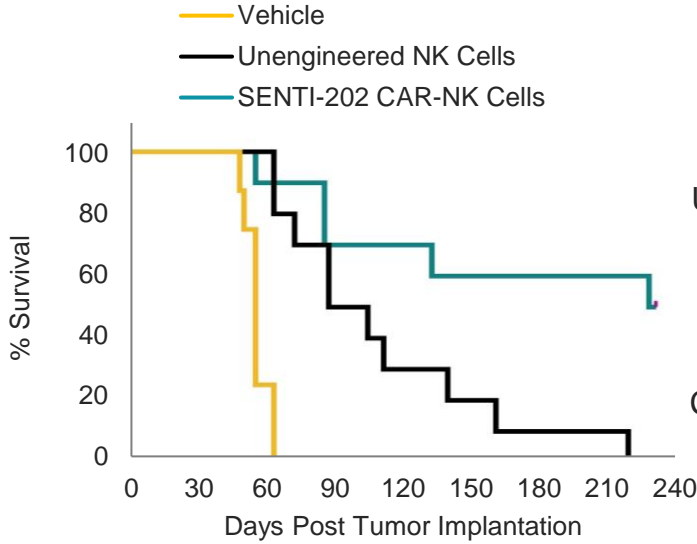


Broad *in vitro* killing of primary CD33⁺ and/or FLT3⁺ AML and MDS tumor cells compared to unengineered NK cells

¹ Both FLT3 wild-type and mutated AML patient samples

SENTI-202 Has Shown Robust Preclinical In Vivo Cancer Killing Activity

MV4-11 AML Human Transgenic NSG Mouse Model



Group	Vehicle	Unengineered NK Cells	SENTI-202 CAR-NK Cells
Median Survival (Days)	56	97	230

***In vivo* suppression of tumor and increased mouse survival in multiple mouse models including MV4-11 AML and venetoclax resistant AML¹**

¹ Muftuoglu ASH 2023

SENTI-202 is Designed to Address the Lack of Clean AML Targets to Improve Selectivity

Treatment Challenges

3 Healthy cell toxicity

Many AML therapies kill cancer cells and HSCs because target antigens are expressed on both

Other CAR-based therapies targeting AML antigens kill healthy cells, leading to adverse events and tolerability issues

4 Treatment tolerability

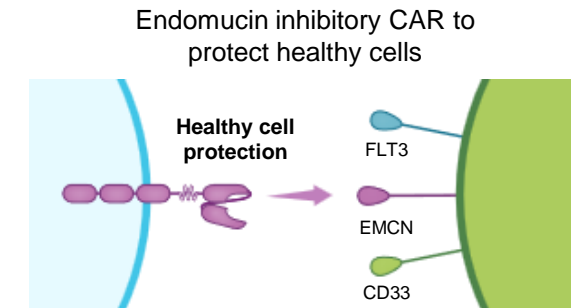
Killing of healthy HSCs leads to prolonged aplasia and myelosuppression

Antigen expression on cells¹

Antigen	LSCs	Blasts	HSCs
CD33	+/-	+	+/-
FLT3	+	+/-	+
CLL-1	+/-	+	-
CD123	+	+	+/-
CD38	-	+	-
NKG2DL	-	+	-

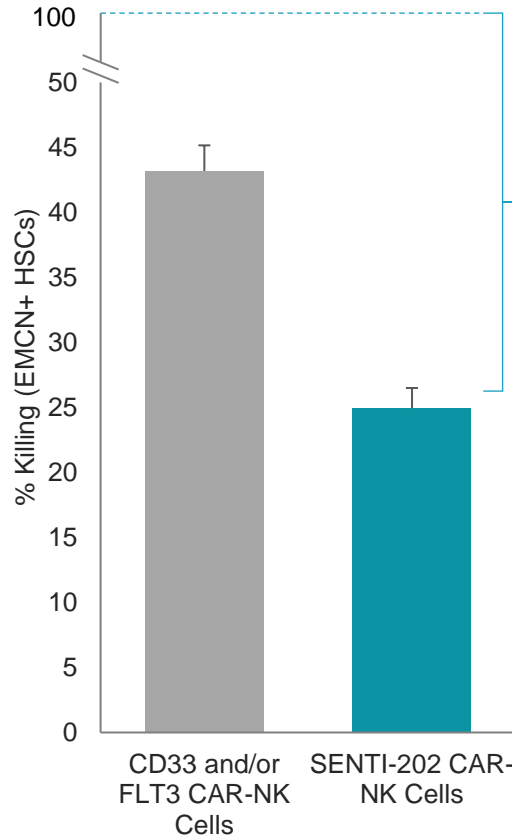
Senti's Solution

SENTI-202 incorporates an inhibitory CAR designed to protect healthy HSCs, even when expressing FLT3 or CD33

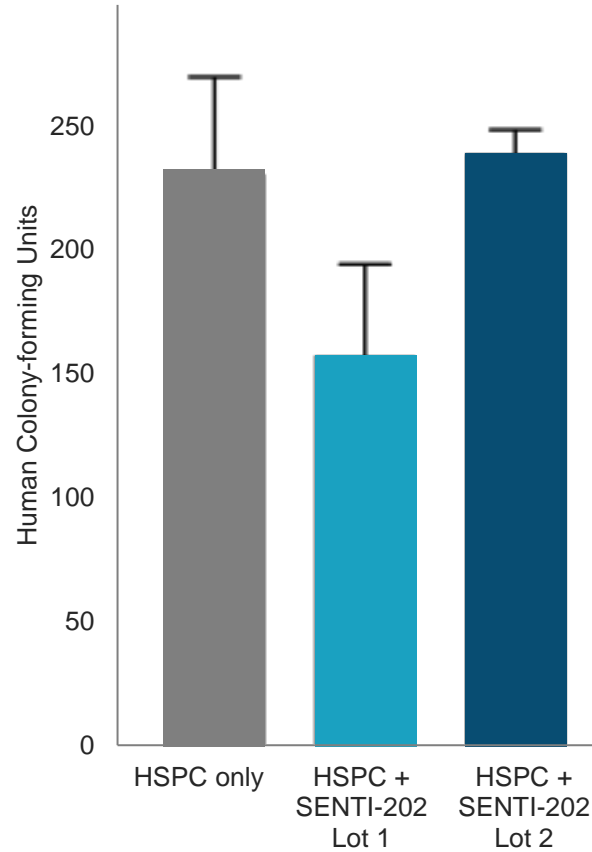


- EMCN was identified and validated as a protective antigen that is expressed on up to 76% of HSCs, but not on LSCs or blasts
- **SENTI-202 is the only known CAR-NK clinical program utilizing the NOT Logic Gate to protect healthy cells in AML**

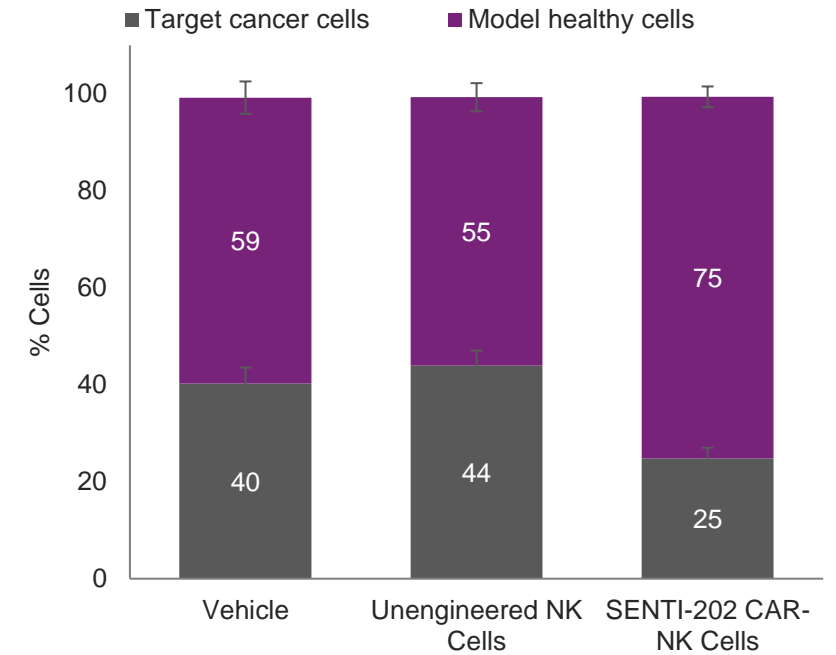
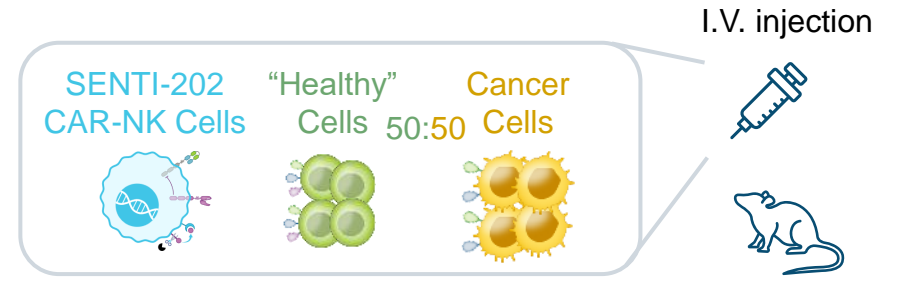
SENTI-202 Has Shown Strong Preclinical Anti AML Selectivity and HSC Protection



***In vitro* protection of primary human HSCs expressing EMCN**



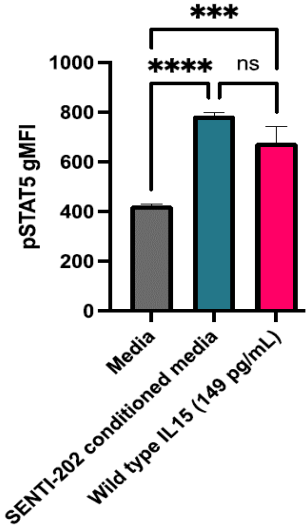
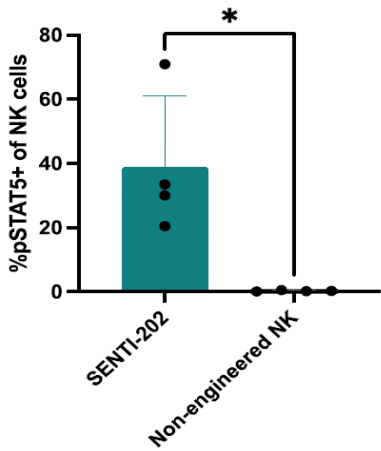
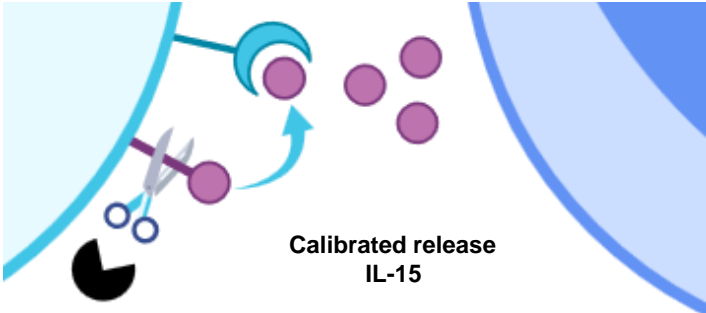
Preservation of colony forming activity of HSPCs



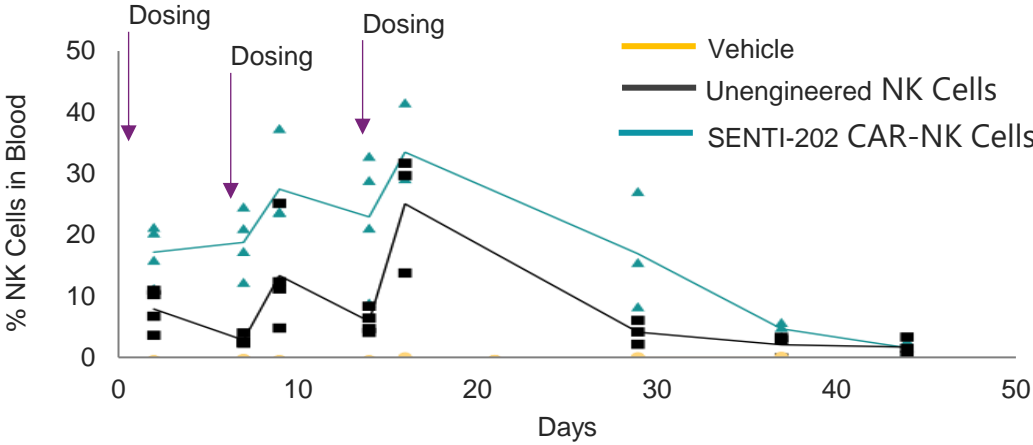
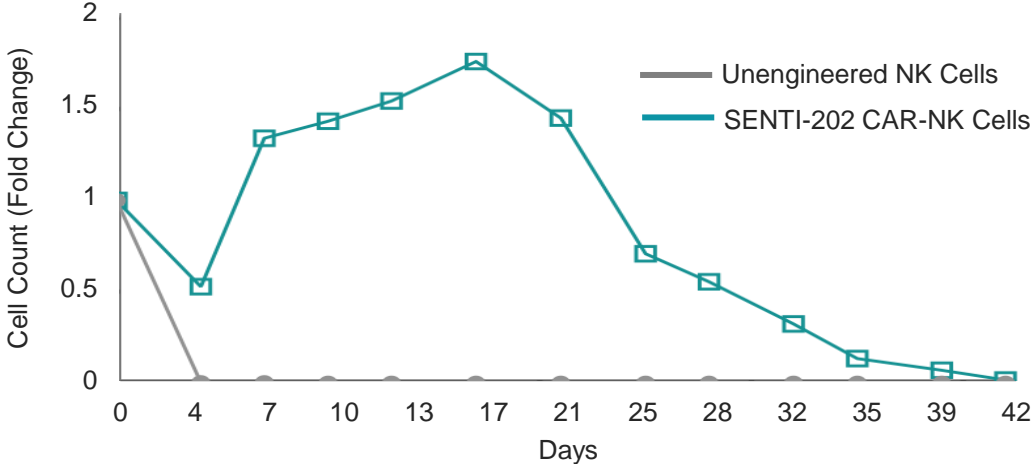
Killing target cancer cells and protecting model healthy cells

SENTI-202 Has Enhanced Proliferation and Persistence in Preclinical Studies and Can Activate Host Immune Cells

crIL-15: calibrated release by local proteases → enhanced NK cell persistence



SENTI-202 demonstrated improved signaling in pSTAT5 assay



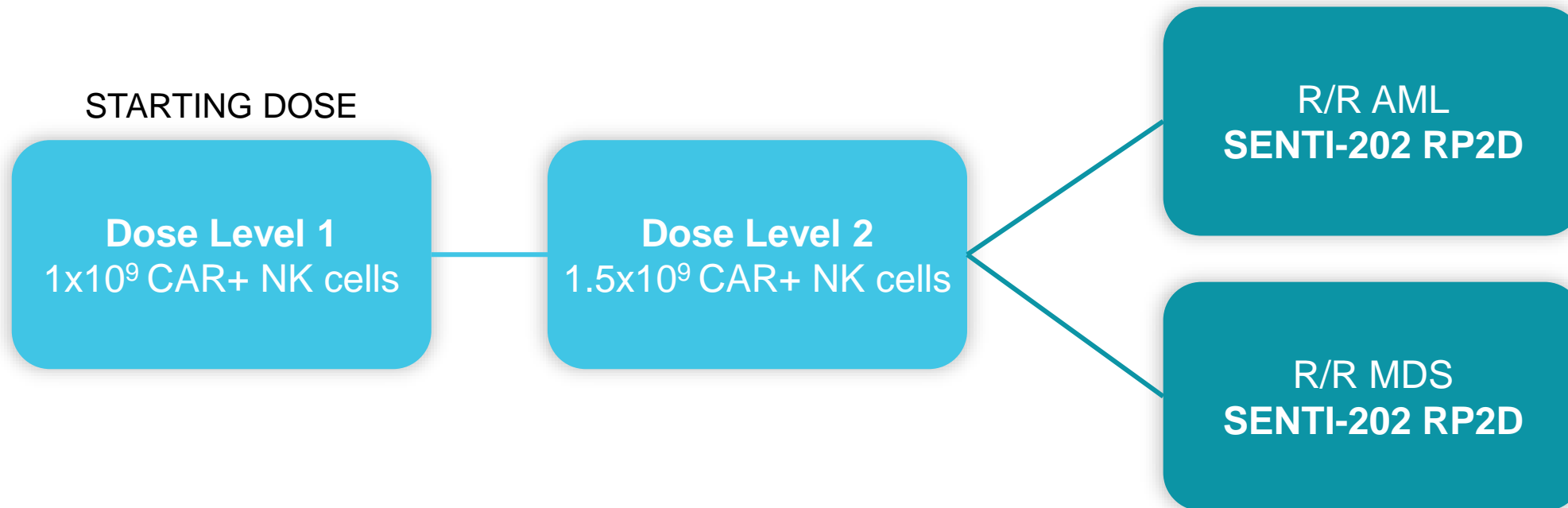
crIL-15 increased persistence of SENTI-202 CAR-NK cells vs unengineered NK cells in vitro and in vivo

SENTI-202 Trial Design Incorporates Prior CAR-NK Trial Findings

Disease Specific Lymphodepletion, Multi-Dose and Multi-Cycles

Dose EXPANSION

Disease-specific expansion cohorts
AML and MDS



SENTI-202 Phase 1 Trial Design

Patient Population

- Adult patients
- R/R CD33 and/or FLT3 expressing heme malignancies
- 2 of 3 patients at each dose level with AML
- Received 1-3¹ prior AML treatments including targeted agents if FLT3, IDH1/2 mutation+

Study Design

- “3+3” study design
- Dose escalation followed by disease-specific expansion cohorts for AML and MDS
- Starting dose 1×10^9 CAR+ NK cells and target dose 1.5×10^9 CAR+ NK cells
- Plans to transition from Phase 1 to pivotal study

Planned Endpoints

- Safety, DLT, identify recommended Phase 2 dose
- Efficacy, including bone marrow recovery and MRD
- Pharmacokinetics (PK), pharmacodynamics (PD), biomarkers to supplement efficacy and immunogenicity

Multi-Dose & Multi-Cycle Dosing

Lymphodepletion

Flu/Ara-C

SENTI-202

2 dose levels

Efficacy

Additional cycles+

-7

-3

0

7

14

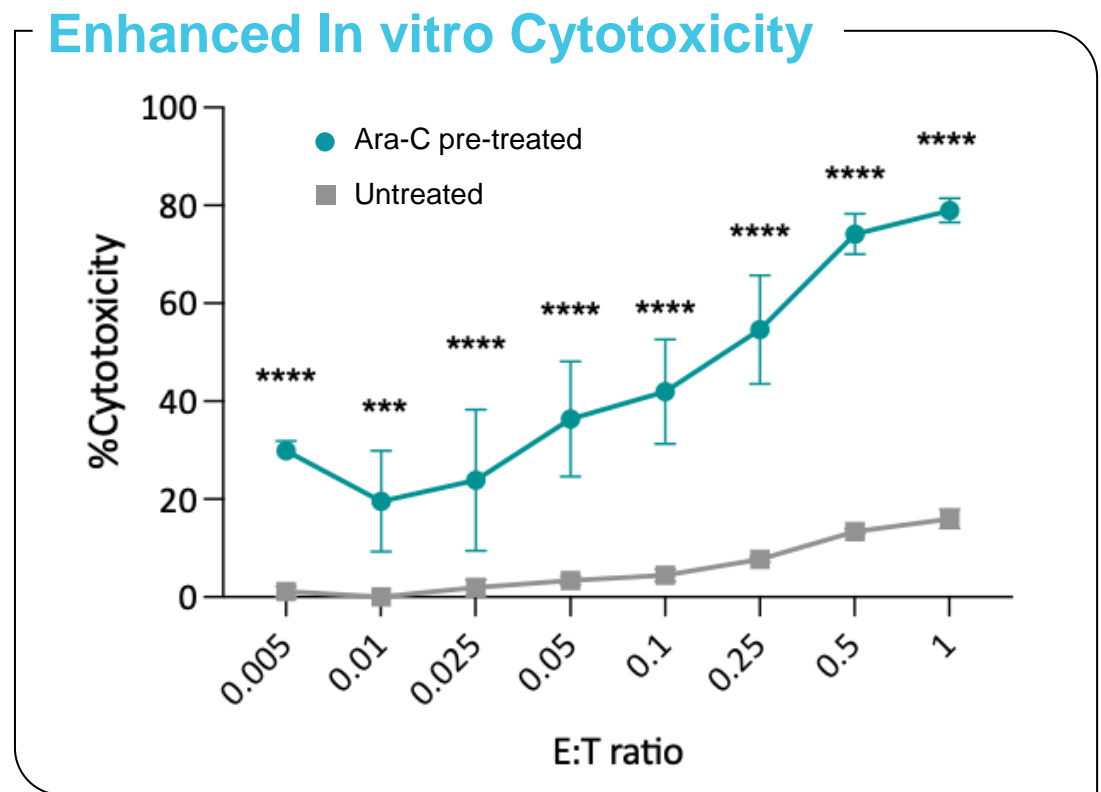
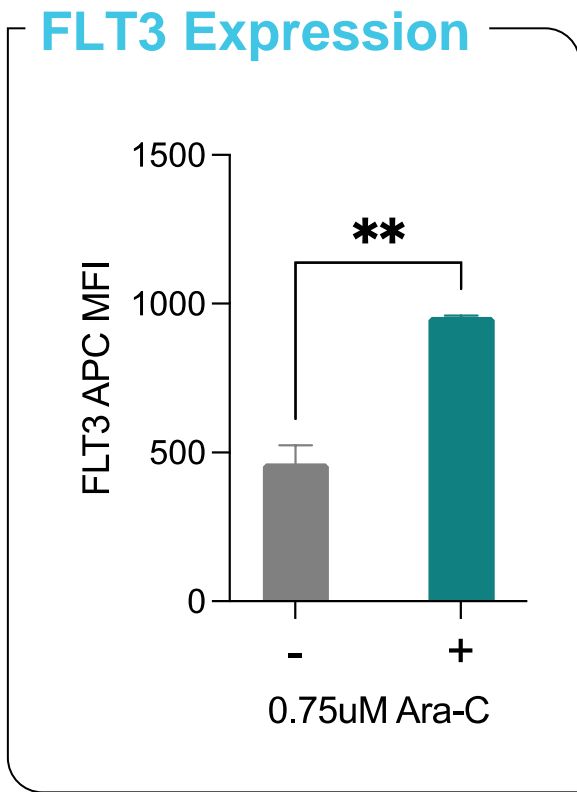
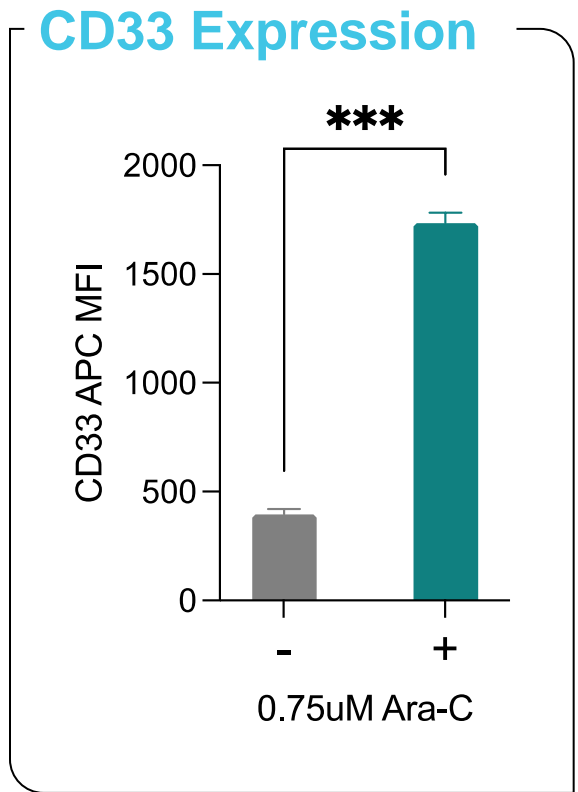
28

- ✓ Seamless Phase 1 to pivotal design
- ✓ Two initial dose levels
- ✓ Adaptive design with option to open IL2 cohort from emerging data

¹ 1-2 prior for MDS

Ara-C Sensitized KG-1a Cells to SENTI-202

Upregulated CD33 and FLT3



- In the CD33 low/FLT3 low KG-1a cell line, 72h Ara-C treatment significantly upregulated CD33 and FLT3 MFI
- Ara-C pre-treated KG-1a cells are sensitized to SENTI-202-mediated cytotoxicity

SENTI-202 Mechanism of Action and Preclinical Data Could Result in Differentiated Clinical Profile

2024 Accomplishments

- ✓ First patient dosed in 2Q 2024

Anticipated Clinical Catalysts

- Initial clinical efficacy data by year-end 2024
- Durability data in 2025

- Serial killing of LSCs and blasts *in vitro* and *in vivo*
- Pre-treatment with Ara-C sensitized CD33/FLT3 low AML
- Addition of EMCN shown to protect healthy hematopoietic stem cells
- crIL-15 engineered to increase persistence multiple times more compared to unengineered NK cells

SENTI-202 was designed to integrate validated mechanisms into one solution, engineered to solve key outstanding problems in AML

More detailed SENTI-202 data can be referenced in our Cell Reports publication titled:

[Precision off-the-shelf natural killer cell therapies for oncology with logic-gated gene circuits](#)

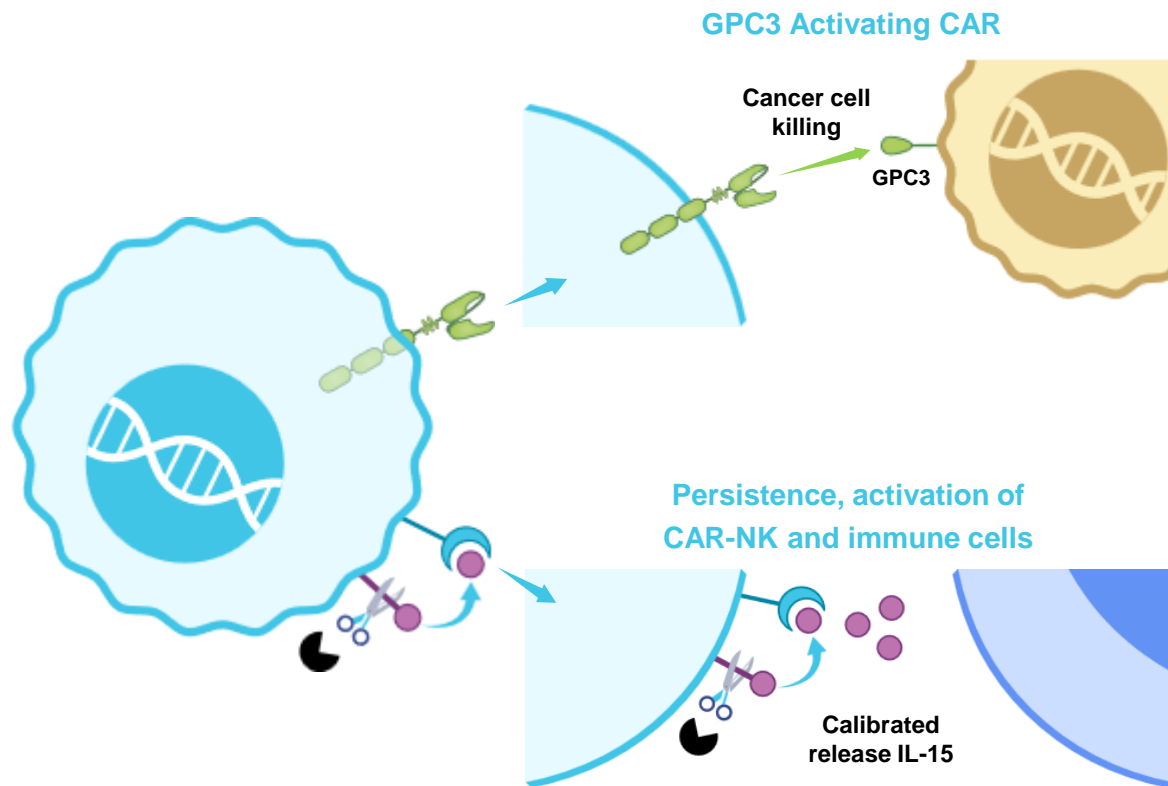


SENTI BIO

SENTI-301A



SENTI-301A Aims to Address Unmet Needs in Solid Tumors With a Focus on HCC



Activating CAR “kill” signal

- GPC3 for hepatocellular carcinoma (HCC) and other solid tumors

Calibrated release IL-15

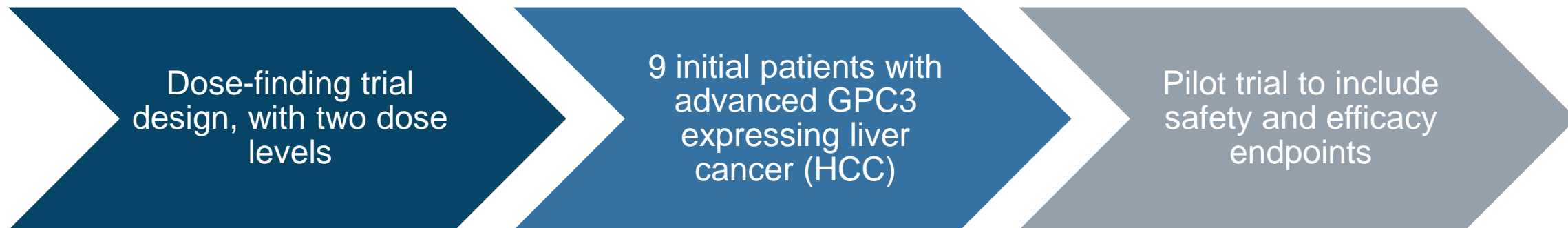
- Potential for increased cell expansion, persistence, and tumor killing

Strategic collaboration with Celest Therapeutics for clinical development of SENTI-301A to treat solid tumors in China, starting with HCC

Collaboration with Celest Therapeutics to Develop SENTI-301A for HCC in China

Key Transaction Terms

- Up to \$156 million in development milestones and potential tiered royalties post-commercialization
- Pilot trial to begin in mainland China with first patient dosing expected in 4Q 2024
- Potential to expand into Hong Kong, Macao, and Taiwan, with Senti retaining all commercialization rights outside of those regions and mainland China



~370,000 new cases of liver cancer in China in 2022, which was over 40% of all liver cancer cases worldwide¹

¹ World Cancer Research Fund International

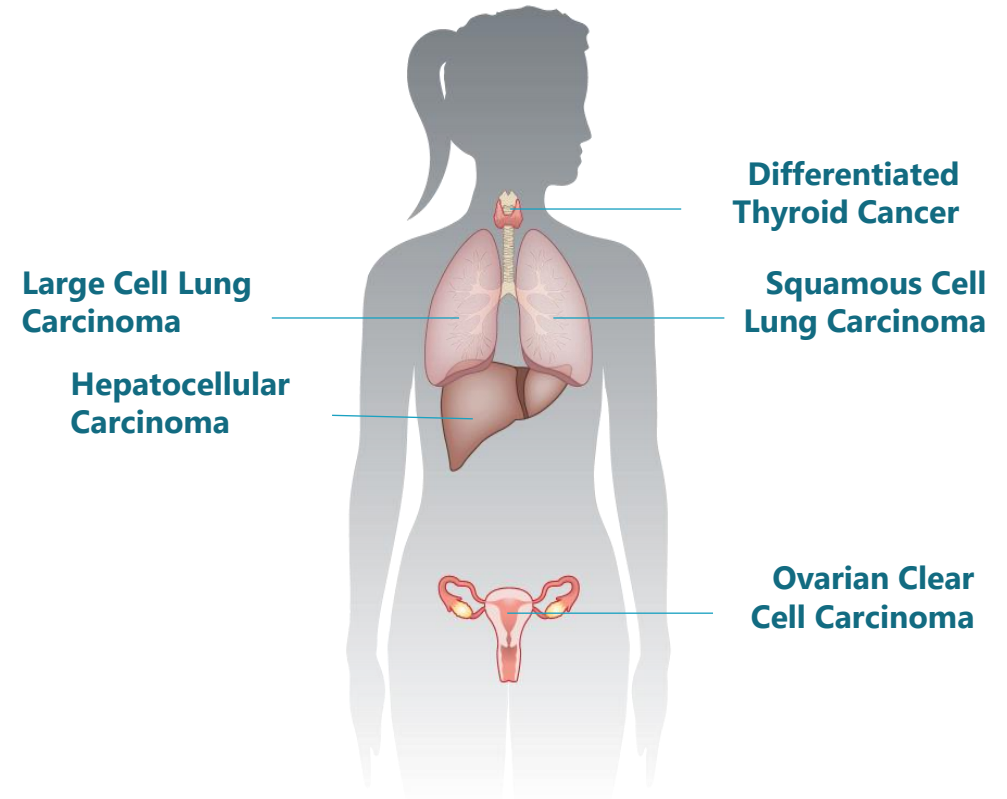
SENTI-301A Is Designed to Tackle GPC3+ Expressing Solid Tumors

GPC3 is expressed in multiple solid tumors

- HCC (70-90% GPC3+)¹ and other solid tumors – lung, ovarian, thyroid (29-54%² GPC3+)
- Academic GPC3 CAR-T cell trials have shown promising activity but limited by CAR-T toxicities precluding multiple dosing and limited durability^{2,3}

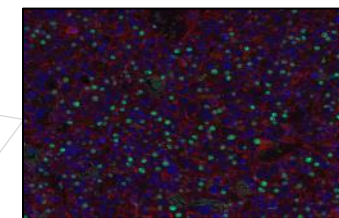
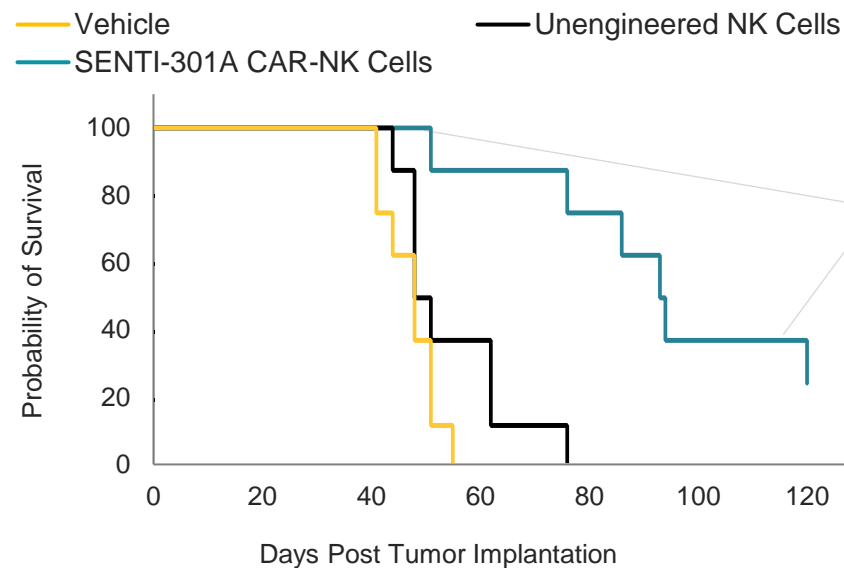
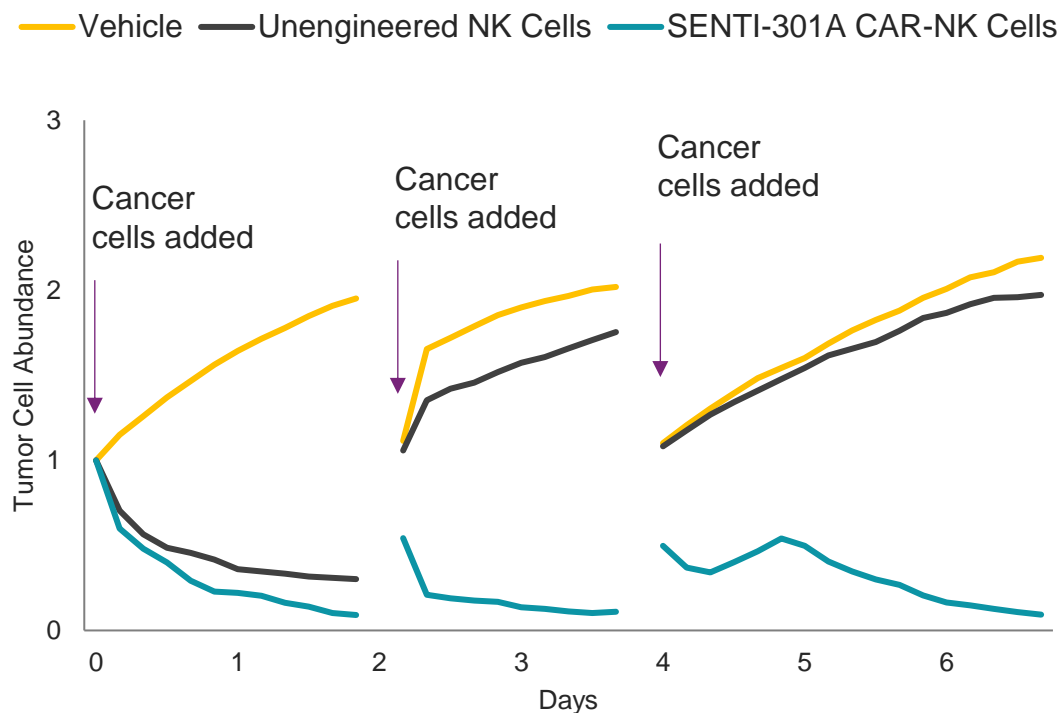
SENTI-301A is designed to target GPC3+ tumors

- Tackle multiple solid tumors with high GPC3 antigen expression via NKs multi-armed with GPC3 CAR and crIL-15



**Common GPC3
expressing tumors**

SENTI-301A Has Shown Robust Preclinical Activity in Liver Cancer Models



SENTI-301A (green) infiltrated into HCC tumor tissue model (red)

Group	Vehicle	Unengineered NK Cells	SENTI-301A CAR-NK Cells
Median Survival (Days)	48	49.5	93.5

Effective in vitro serial killing of HepG2 cell line

Increased survival, tumor infiltration and response in HepG2 mouse model

Planned Early Exploratory Clinical Study Design of SENTI-301A

Patient Population

- Adult patients
- Advanced GPC3-positive Hepatocellular Carcinoma
- Unresectable stage B or C (per BCLC)
- Failed at least 1 prior line, including PD1/L1 & TKIs

Study Design

- “3+3” study design
- Dose escalation followed by expansion cohort
- Multiple dose levels
- Opportunity to transition to US clinical study

Planned Endpoints

- Safety, DLT, recommended Phase 2 dose
- Efficacy, using RECIST v1.1, mRECIST & iRECIST criteria
- Pharmacokinetics (PK), pharmacodynamics (PD), biomarkers to supplement efficacy and immunogenicity

Multi-Dose & Multi-Cycle Dosing

Lymphodepletion

Flu/Cy

SENTI-301A

Multiple dose levels

Efficacy

Additional cycles+

-5

-3

0

7

14

28

**First patient dosing in China
expected in 4Q 2024**



SENTI BIO

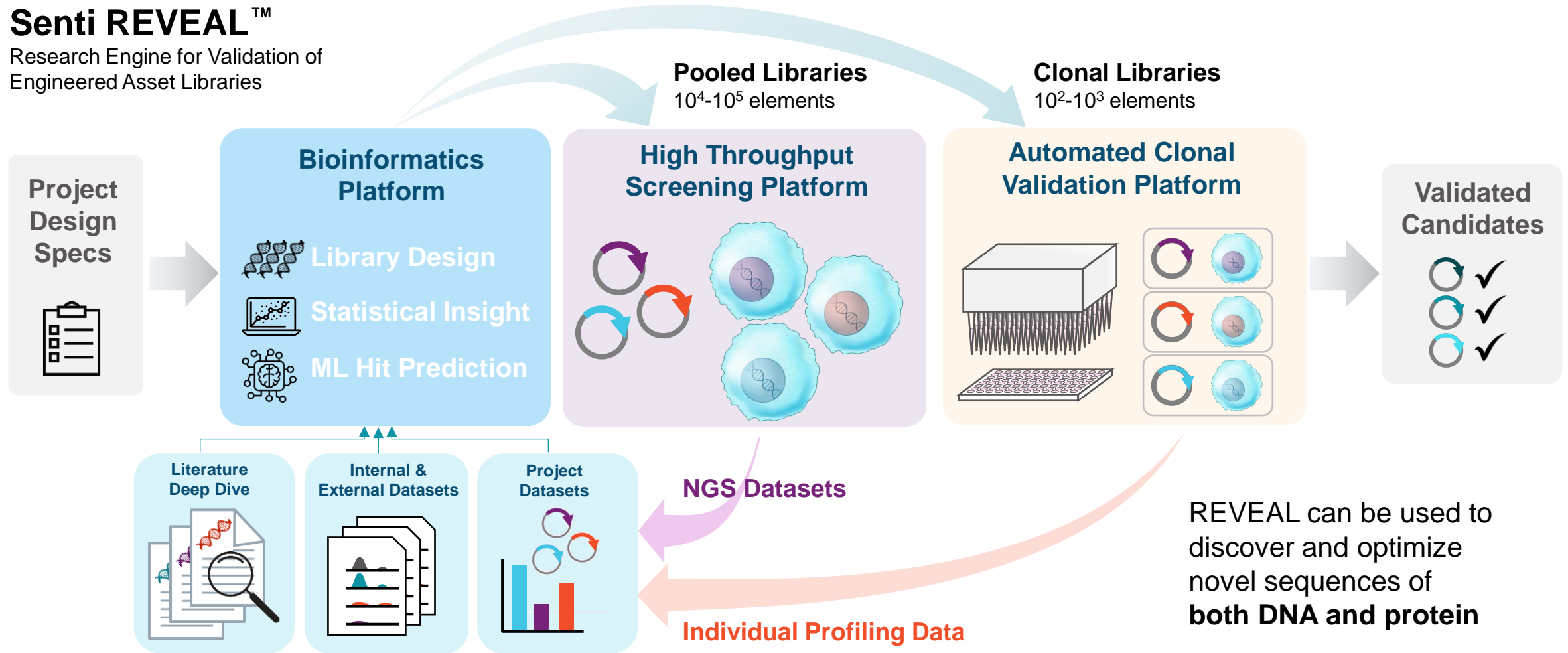
Platform



Senti's Discovery and Optimization Engine For Novel DNA and Protein Assets

Senti REVEAL™

Research Engine for Validation of Engineered Asset Libraries

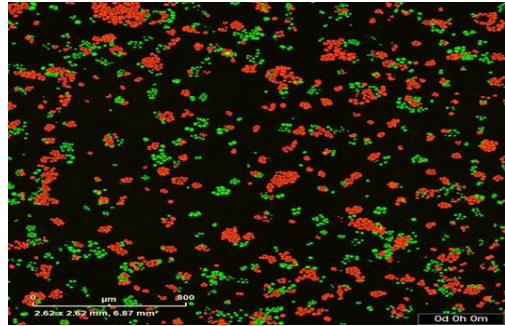


Senti's REVEAL Platform Designed to Enable Rapid Optimization of Highly Potent & Protective Logic Gates for NK and T Cells

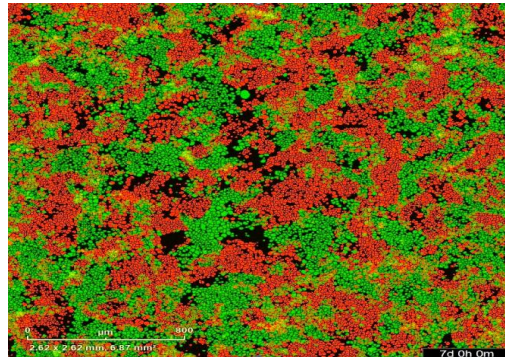
● Cancer cells (*VSIG2*⁻*CEA*⁺)

● Model healthy cells (*VSIG2*⁺*CEA*⁺)

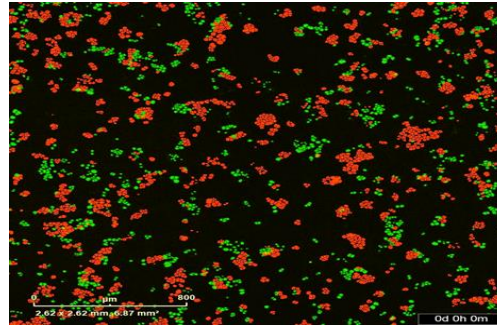
No NK Cells



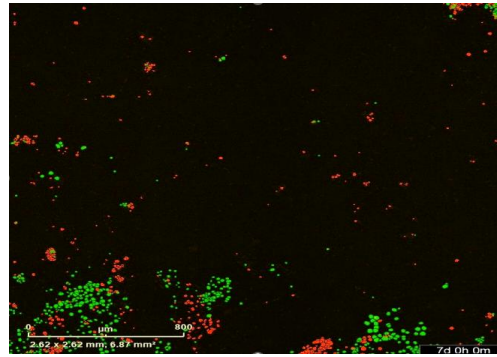
↓ No killing of cancer or healthy cells



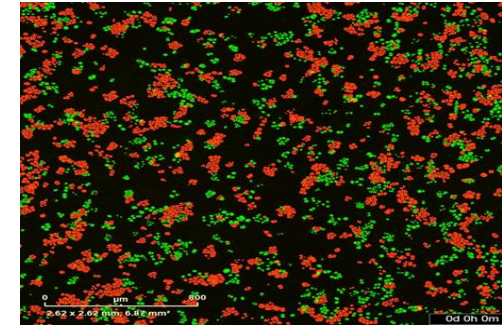
CEA CAR-NK



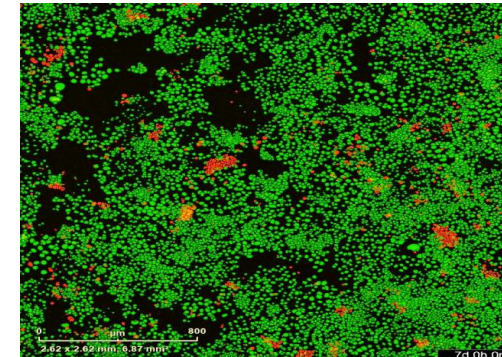
↓ Significant killing of both cancer and healthy cells



CEA NOT VSIG2 CAR-NK

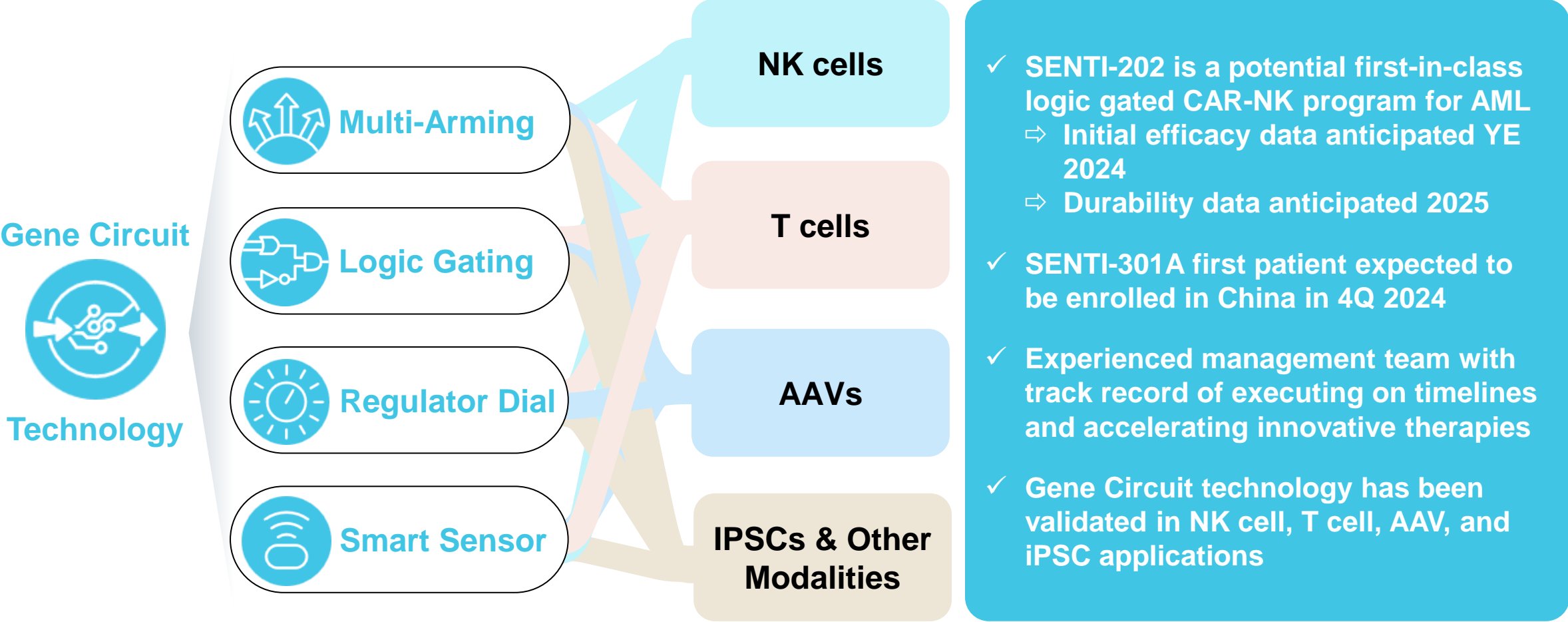


↓ Precise killing of cancer cells while sparing healthy cells



CEA NOT VSIG2 CAR-NK cells spared VSIG2-expressing model healthy cells while maintaining robust on-target, on-tumor killing of CEA+ cancer cells

Executing Towards Bringing Gene Circuit Medicines to Patients





SENTI BIO

Thank You!

